



safe | fast | accurate | reliable  
0800 027 0671 • [www.methameasure.co.uk](http://www.methameasure.co.uk)



**METHA**MEASURE  
LIMITED

CDRx   
more than just a CD Register



fast | accurate | reliable

The **METHAMEASURE** system takes the hassle out of dispensing methadone allowing pharmacists to dispense directly from bulk stock, without making up doses in advance.

MethaMeasure is a system that safely and accurately dispenses the correct dose of Methadone to patients. It uses fingerprint and picture recognition to positively identify patients whilst automatically creating the CD register. The time savings to a busy pharmacy and the reassurance that compliance standards are met mean it is a popular choice for anyone dispensing Methadone to 10 or more patients daily.

## MethaMeasure systems now accurately and safely dispense more than 6 million doses of Methadone a year.

Methameasure has solutions that work in all different sizes of pharmacies or drug clinics right up to huge multi-winged prisons. Installing the system is cost-effective if you have 10 or more patients. It saves time, money and effort, whilst improving patient safety. There is no upper limit to the number of patients the system can handle - a single pump can dispense to hundreds of patients a day.

The MethaMeasure system is FREE to install, all the required hardware is provided as part of the contract which starts from £199 pcm per system. A 28-day trial is available to pharmacies and a 56-day trial available to any prison or drug clinic with over 50 patients.

In 2012 Stephen Dickson the original developer of MethaMeasure was recognised by the Royal Pharmaceutical society for his invention. He was formally presented with the Leadership in Pharmacy Award for the forward-thinking approach to a problem.

Since then this has reinforced our belief that Methameasure is the safest, most efficient and cost-effective method to dispense methadone.



Want to know more? Call **0800 027 0671** or email **[info@methameasure.co.uk](mailto:info@methameasure.co.uk)**

safe | fast | accurate | reliable

## OUR COMPANY HISTORY

### METHAMEASURE

Is a family business, the parent company was founded in 1979. MethaMeasure began operating as a subsidiary in 2001 and grew to become its own entity in 2005.

### OUR ETHOS

Our core ethos is to deal with customers honestly, directly and do our up-most to help. We give back to the communities we work in both with our giving and with our environmental sustainability.

### METHAMEASURE

Is working towards improving environmental sustainability by purchasing carbon credits. The company regularly supports local and national charities, including; St. Andrews Hospice, The LDN Research Trust (Autoimmune), the MS Society, Marie Curie Cancer Care, the Red Cross and most recently the British Heart Foundation.



## OUR PRODUCT

Our units are:

- > Constructed in Medical Grade PVC or specially coated steel. (To inhibit bacterial growth)
- > Fully Compliant with Safe Custody Regulations
- > Operate on environmentally friendly 12/24V DC
- > Our pumps record variances between 0.1%/100ml and 0.5%/300ml. (The GPhC 'allowable' variance with CD Liquids is 2% overall)
- > Can be used to manage and record Methadone, Suboxone and Subutex prescriptions
- > Available on Windows tablet devices for small installations
- > Fully compatible with CDRx (see [www.cdregister.co.uk](http://www.cdregister.co.uk) for more information)

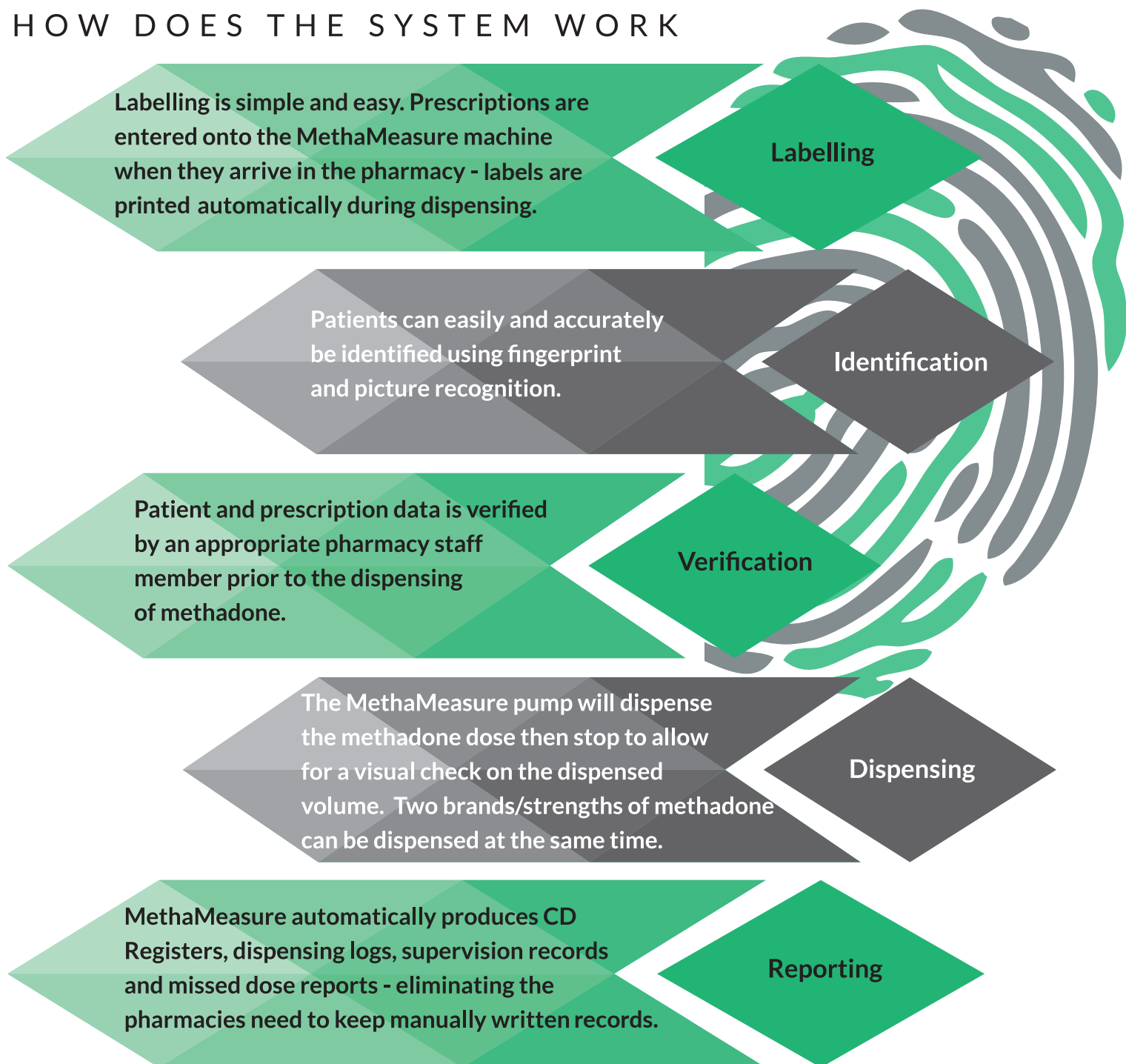


MethaMeasure pumps, all spares and parts come from and are sourced from the UK. We use small businesses and sole traders where possible to support the local economy.

Want to know more? Call **0800 027 0671** or email **[info@methameasure.co.uk](mailto:info@methameasure.co.uk)**

safe | fast | accurate | reliable

## HOW DOES THE SYSTEM WORK



The MethaMeasure system has been designed within a pharmacy environment and has been tailored to the exact needs of our customers. Our system allows pharmacies dispensing Methadone to:

### Improve Safety

- Use highly accurate and fast pumps.
- Ensure the correct patient receives the correct dose.
- Fast dispensing of Methadone with <1% variance.

### Reduce Overheads

- Significantly reduce labour costs by increasing efficiency.
- In most cases our customers reduce labour costs by 70-80%.

### Increase Operational Efficiency

- Introduce a safe and efficient Methadone dispensing process.
- Standardised process for dispensing Methadone.

### Gain competitive Advantage

- Equip your pharmacy to deal with increased Methadone prescriptions.
- Reduced staffing hours allows you to develop other areas of your business.

Want to know more? Call **0800 027 0671** or email **info@methameasure.co.uk**

## FAQ'S

### Who uses MethaMeasure within the UK?

MethaMeasure is used by pharmacies such as Well Pharmacy, Rowlands Pharmacy, Lloyds Pharmacy, and Superdrug Pharmacy. It is also used in many other smaller independent Pharmacy groups (Weldricks and HUB Pharmacy) and a growing number of prisons.

### How many patients do I need for the system to be worthwhile?

Our customers' patient numbers vary from 10 to 250+. Irrespective of the patient numbers, our customers all find the system beneficial in respect to patient safety and cost effectiveness.

A smaller system for pharmacies with under 10 patients a day is available.

### Can MethaMeasure work as a standalone system?

Yes, depending on your setup, MethaMeasure may be more suitable within your setting as a standalone system.

### Can MethaMeasure produce labels?

Yes, MethaMeasure can produce labels for each dose it dispenses. If required it can also prepare bag labels.

### Is the MethaMeasure system only suitable for community pharmacies?

No, MethaMeasure has been designed to ensure it is suitable for correctional facilities, hospital pharmacies and community pharmacies.

Both our hardware and software are extremely flexible. Everything can be stand alone or all data can be linked across local and wide area networks.



## PRICING

The MethaMeasure system is offered on a monthly rental basis. The rental has been priced appropriately ensuring the system is cost effective and affordable for pharmacies dispensing to 10- 15 or more patients. It is fully inclusive of hardware, the software licence, support and on-site visits where required.

The fully inclusive monthly rental charge is less than £7 per day, there are no hidden costs. There are no installation or training fees. The more patients the pharmacy dispenses to, the more cost effective the system becomes.

In order to help you assess whether or not a MethaMeasure system may be of benefit to your pharmacy, we have provided a business case study from some of our existing customers.



## WHAT PROFESSIONALS ARE SAYING

**Ian Moffat : Craigneuk and Petersburn Pharmacy**

*"The MethaMeasure basically does what it says on the tin. After the system came to my attention and we had a trial period, we haven't looked back since. The system has proved to be very time saving. I would go as far as to say it has reduced time spent by 100%. The helpline and service provided by the company has also been first class."*

**Laura Alfton : Methadone Dispenser**

*"The MethaMeasure system basically works itself and is more accurate. We do a lot of Methadone dispensing here and knew the MethaMeasure system would save us a considerable amount of time. We are really pleased with it so far; it's certainly freed up more of my time"*



**Wendy William : Dell Pharmacy**

*"The best feature is the speed, by far. Normally in the morning if we were to measure it out it would probably take maybe a minute to measure each person, and then having the pharmacists to check it may lead to errors. With MethaMeasure once we calibrate it in the morning, which only takes a minute to do, it makes it a lot quicker."*



**Nadine Miller: Dickson's Pharmacy.**

*"We believe that MethaMeasure is the fastest and easiest way to comply with the CD regulations – it really does save hours of time in practice. In our experience it saves the average pharmacy over £1000 a month in staff time, bottle costs and pharmacist time, the patients love it (in the majority) and it reduces patient interaction time dramatically. We hope that it will become the gold standard in Methadone dispensing."*



safe | fast | accurate | reliable

The MethaMeasure system was created to improve the efficiency of the Methadone dispensing process.

As 'dispensing fees' have decreased, this is one of the only services that can still generate income from the dispensing and supervision fee attached to Methadone dispensing.

By reducing the time pharmacy staff spend on the process they can dedicate more time to other services or give patients more care and attention.



## HUGE SAVINGS

MethaMeasure systems are installed in hundreds of UK pharmacies, drug clinics and prisons across the world.

Features;

- > Fingerprint Registers are used to safely identify patients
- > CD Registers are created automatically
- > A system can be designed around your needs, to fit your available space
- > Systems save dispensing time, reduce register writing time to zero, help with compliance with MDA/CD regulations and can help generate more profit
- > All hardware, software and support is included in the monthly rental of £199

MethaMeasure saves you between **15 - 40 HOURS A WEEK.**

The method is simple; a patient comes into the pharmacy, is recognised by picture and fingerprint recognition, it brings up a dose from the computer record and is verified by a pharmacist/technician. The dose is dispensed directly into a cup for the patient to drink.

## INSTALLATIONS



MethaMeasure is popping up in pharmacies, clinics and prisons across the UK, Ireland and other parts of the world as far as Kenya.

Want to know more? Call **0800 027 0671** or email **[info@methameasure.co.uk](mailto:info@methameasure.co.uk)**

## CASE STUDY: NORTH WEST LOCAL INDEPENDENT PHARMACY

A Pharmacy that has been working with Methadone dispensing since 2009 and quickly installed MethaMeasure as they realised the need to add procedure and order to the manual process they used. They have 280 weekly patient interactions to dispense methadone.

### What prompted you to add the machine to your pharmacy?

We wanted to be more efficient, safe and save time. MethaMeasure ticks the boxes for all those. Safety was a concern, as there had been dispensing errors in the past, with MethaMeasure it has a picture check, a fingerprint check and a date of birth check preventing mistakes. It gives a cost saving but even more importantly peace of mind.

### What is the best feature MethaMeasure offers you?

The best feature is the speed, by far. Normally in the morning if we were to measure it out it would probably take maybe a minute to measure each person, and then having the pharmacists to check it may lead to errors. With MethaMeasure once we calibrate it in the morning, which only takes a minute to do, it makes it a lot quicker. we are a lot less focused on the process and we can spend more time with each patient.

### How did you find dealing with the company side of MethaMeasure?

It was really good, if we've had a problem, we've always rung the support number and someone has always been there to help out, people have got back in contact with us very quickly.

Based on 280 weekly patient interactions over a 5-day week.

## MANUAL DISPENSING

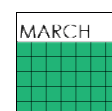
**100** minutes to set up daily



**5** minutes spent with each patient



**78** whole days spent each year



**£1892.80** spent on bottles each year



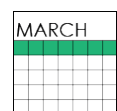
## METHAMEASURE DISPENSING



**8** minutes to set up daily



**1** minute spent with each patient



**12** whole days spent each year



**£794.56** spent on bottles and cups each year



**YEARLY SAVING OF £21,453**

Weekly time saving with MethaMeasure 30.2 hours per week that is 65.4 days saved per year.

The pharmacy has a potential cost saving taking into account the rental of £20,301p/a in staff time and an additional saving on non-recyclable plastic bottles @13p each £1,152. p/a. (excluding VAT)

TOTAL ANNUAL SAVING £21,453



safe | fast | accurate | reliable

## CASE STUDY: NEWLY INSTALLED SYSTEM - INDEPENDENT PHARMACY UK

A community pharmacy working for 8 years and dispensing methadone the pharmacy have recently added the MethaMeasure double pump system along with CDRx.

The Manager pharmacist says;

*"Adding the system has allowed the pharmacy to use the reclaimed time better, spending better quality time with patients to look after their wellbeing. It has allowed us to add new services to further expand out horizon"*

The pharmacy uses a double pump system and uses the camera to recognise patients. Based on 400 patient interactions per week dispensing 6 days a week.

### What prompted you to add the machine to your pharmacy?

I had worked in a pharmacy dispensing Methadone before, so I had dealings with it. When I saw MethaMeasure I thought this is amazing. Especially if you've got a lot of methadone patients. We looked at how long it would take to measure the Methadone manually and the cost, it was a purely business decision.

### What is the best feature MethaMeasure offers you?

Efficiency, knowing that you don't have to stand there and measure it out, it's a controlled drug, so knowing that you're getting it specific it gives you the reassurance you need. When it's busy to have that accuracy really makes a difference.

### How is it dealing with the company side of MethaMeasure?

Super easy, they came in and showed us everything we needed to know, spent a full day with us to show us how to use it. They showed us how to enter all the people into the system. It was a massive help, as then we could use it straight away.

Weekly time saving with MethaMeasure 36 hours per week that is 78 full days saved per year.

The potential cost saving taking into account the rental is £24,121 p/a with time saving. Freeing staff to attend to other work offering other services. Bottle cost saving bottles are 17p per bottle saving £2,590 p/a (excluding VAT) The Pharmacy now uses paper cups costing around £8 per month TOTAL ANNUAL SAVING £26,773

## MANUAL DISPENSING

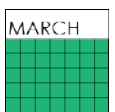
**180** minutes to set up daily



**4** minutes spent with each patient



**94** whole days spent each year



**£3536** spent on bottles each year



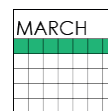
## METHAMEASURE DISPENSING



**8** minutes to set up daily



**1** minutes spent with each patient



**16** whole days spent each year



**£946** spent on bottles and cups each year

**YEARLY SAVING OF £26,773**



Want to know more? Call **0800 027 0671** or email **info@methameasure.co.uk**

**NEWS ARTICLE** National Association of Primary Care

# Automated Methadone dispensing improves safety and saves money in primary care.

## HOW IS METHADONE DISPENSED TRADITIONALLY?

The traditional process used for dispensing methadone involves hand measuring doses of the drug into medicine bottles, using either a conical flask, bottle-top dispenser or a Baxa repeater pump.

There are two common methods to manually prepare Methadone:

a) The pharmacist, technician, or nurse must measure each dose, individually label each bottle and attach it to each kardex or prescription. These pre-prepared doses must then be stored in a Controlled Drugs cabinet until they are required.

The system increases the opportunity for human error - dispensers can read conical's incorrectly and bottle-top dispensers and Baxa pumps must be calibrated to be accurate. In addition, dispensers can read the prescriptions/kardex incorrectly, label the bottle with the wrong name and/or store the bottle in the wrong place. This is time consuming, creates excessive clinical waste (in used medicine bottles) and is extremely inefficient.

b) Less commonly nurses (or pharmacists) in certain primary care settings will measure doses at the time of administration -using a conical flask, oral syringe, bottle-top dispenser or pump. These doses are then double checked.

Here the patient is potentially at risk, as there is almost no opportunity to catch an error before the patient has had their dose administered. A lapse of concentration can mean the death of a patient. Although faster, the administering nurse is taking responsibility for doses administered to patients with poor procedural control.

## Risks

If a patient was to be overdosed and subsequently die, the standard operating procedure would likely be deemed inappropriate and the staff held directly

responsible. In this current litigious society this is a situation which under current regulations can result in prosecution for manslaughter - as dispensing errors have not (yet) been decriminalised.

Methadone dispensing presents one of the highest risks and most labour-intensive repetitive activities occurring in primary care.

Whether this is in a prison, drug clinic, or pharmacy setting - the number of hours required to prepare for dispensing, actually administer the doses and complete the paperwork required to comply with the necessary legislation is often prohibitive.

Prisons, drug treatment clinics and pharmacies are often limited in the number of patients they can administer to, not by lack of doctors to prescribe the methadone, but by lack of staff time and space to administer the daily doses of the drug. Since 2004, MethaMeasure have been providing automation solutions to dramatically improve this process saving time, money, effort and dramatically reducing errors.

## WHAT IS A METHAMEASURE SYSTEM?

The MethaMeasure systems remove the worry from providing a methadone administration service. The systems consist of a PC attached to a highly accurate pump, fingerprint sensor; label printer and camera. The pump is made of bacterial resistant plastic, or safe custody regulation compliant steel depending on local requirements. Patients present at the clinic/dispensary and place their finger on a fingerprint sensor. The dispensing technician is then presented with a picture of the patient, a dialog with their daily dose, and are offered the opportunity to check this before it is dispensed automatically from the pump. Multiple systems can be linked together;

for example, in a prison, to share data between terminals on a local network - or systems can be linked securely across the internet for the purposes of sharing data with a head office. MethaMeasure systems then automatically produce the controlled drugs registers, in the home office approved format. These can be stored electronically, or physically using a printer.

Additionally, if the dispensary is pre-preparing doses in bottles as described above there is a significant cost saving because the medicine bottles are no longer required, unless on occasions covering days the pharmacy is not open. The environmental impact of using paper cups over plastic bottles is important. Using MethaMeasure to dispense a single dose to a patient takes under 60 seconds - from start to finish - meaning that each dispensary can handle a large number of patients per day in their pharmacy.

In practice, installing a MethaMeasure machine is cost neutral at 10 daily Methadone patients and is money saving thereafter.

MethaMeasure is the world's leading methadone dispensing system. Our systems now dispense methadone daily throughout Europe, North America and East Asia. In 2018, MethaMeasure dispensed more than 6 million doses of methadone without incident; helping pharmacies worldwide safely service more than 30,000 patients receiving methadone doses dispensed through MethaMeasure systems.

The MethaMeasure systems halves dispensing time, from a patient perspective and reduces paperwork to effectively zero for the user. All in all, in a dispensary servicing 20 or more patients, the time savings can be well in excess of one hour per day.



Call **0800 027 0671**

or email **[info@methameasure.co.uk](mailto:info@methameasure.co.uk)**

**for more information**

safe | fast | accurate | reliable

[www.methameasure.co.uk](http://www.methameasure.co.uk)



**METHAMEASURE**  
LIMITED

**CDRx**   
more than just a CD Register

# Electronic Controlled Drugs Register

## FEATURES

### Consumer Advertising in your Pharmacy

We have taken the hard work out of running a professional waiting area advertising system. We call it the 'PharmaTV Service' which has been successfully running in pharmacies for over 10 years.

This is integrated into the [cdregister.co.uk](http://cdregister.co.uk) platform. It allows you to create customised promotions and adverts easily personalised for your own messages. You can promote your own goods and services directly to your customers.

- Create your own personalised slides
- User friendly and quick to set up
- Boost your MUR's/NRT and deliveries

All you need is a standard TV or monitor installed in your pharmacy, connect it to the internet and follow the instructions on CDRx.



## FAQ'S

### Q: How do I sign up?

A: You can get a FREE 28 day trial by going to [www.cdregister.co.uk](http://www.cdregister.co.uk) and creating an account. Make sure you use a shop email account as you will be emailed a verification code.

### Q: What are the main benefits of this product?

A: In a word, compliance. With CDRx you demonstrate to the GPhC that you review your records, keep accurate running balances, remove clutter and accept feedback.

### Q: How does it work?

A: All the data is centralised on our servers - the internet connection is used to access a secure website.

### Q: Where is the data stored?

A: Across multiple UK data centres, compliant with the highest levels of security and encryption.

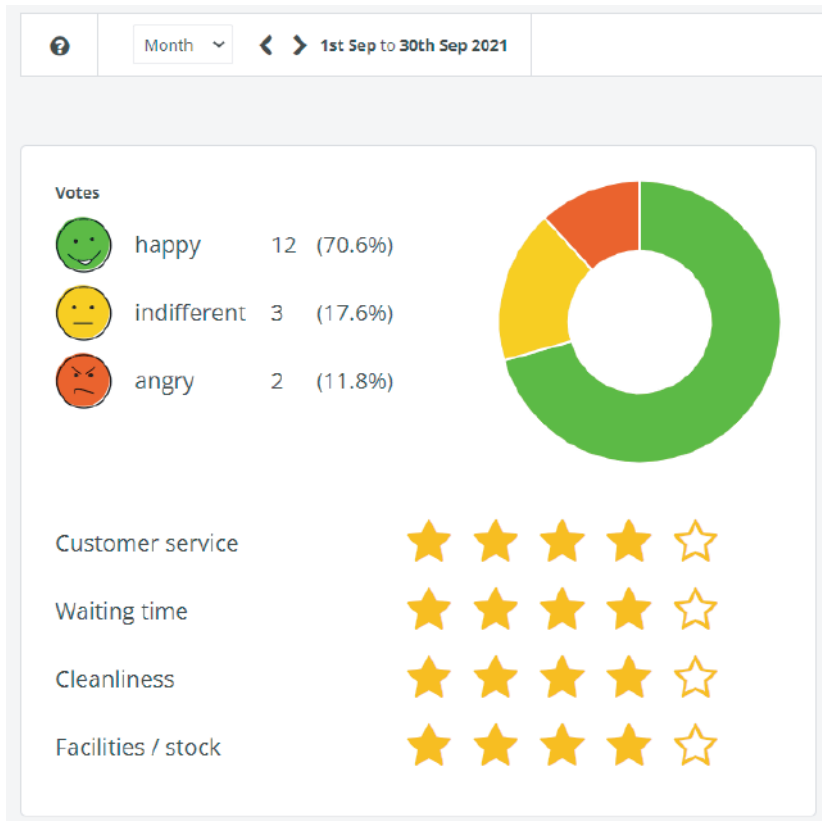
### Q: What if we want to stop using CDRx?

A: Even if a subscription has lapsed you will still be able to access your data but you will not be able to add new entries. Simply use the balance to start a new paper register if required.

**CDRx**   
more than just a CD Register

Want to know more? Call **0800 027 0671** or visit **[www.cdregister.co.uk](http://www.cdregister.co.uk)**

## FEATURES



The feedback screen prompts the user to 'How did we do today?' with three face icons: happy (green), indifferent (yellow), and angry (red). Below this, it asks 'Great, would you mind giving more feedback?' and provides four categories for rating (out of 5 stars):

- Customer service: 4.5 stars
- Waiting time: 4.5 stars
- Cleanliness: 4.5 stars
- Facilities / stock: 4.5 stars

A 'save' button is located at the bottom right.

### Customer Feedback

Under the new premises' standards – patient feedback is an important part of being a “Good” pharmacy. Using any online tablet, pop it on a stand on your counter and invite people to give you feedback about the service they have received.

The information is logged and stored. It's a simple effective method of collecting feedback. To review the data just access your information dashboard. Visit [www.cdregister.co.uk](http://www.cdregister.co.uk) and follow the instructions. The customer is presented with a simple feedback screen. The results are then stored in your [cdregister.co.uk](http://cdregister.co.uk) dashboard.

### Customer advertising

Ever thought that your waiting area, or front counter was a poorly used resource? We have taken the hard work out of running a professional waiting area advertising system. We call it the 'PharmaTV service' which has been successfully running in pharmacies for about 10 years.

The difference is, it's now integrated into [cdregister.co.uk](http://cdregister.co.uk) - and fully integrated by the pharmacy user.

Customised adverts for any product, service or special offer can be created in just a few clicks.

All you need to do is have a TV or monitor installed in your pharmacy, connect it to the internet and follow the instructions on CDRx.



# Electronic Controlled Drugs Register

## Near miss log

+ Add entry

Page

page

Dispensing near miss log

Page

Date of error	Time of error	Type of error	Name of drug(s) involved	Brand of drug (if any)	Action taken	Learning points	Staff Initials	Pharmacist Initials

D=wrong drug  
M=missing item

L=wrong label  
N=wrong patient

F=wrong form  
E=out of date

Q=wrong quantity  
P=misread prescription

S=wrong strength

X=transposed labels

## Features

Near miss and error logs are a useful tool to satisfy the requirements of the GPhC. It's clear in the Premises Standards that appropriate recording of mistakes and learning from them is the mark of a "Good" Pharmacy.

## The electronic error/near miss logs

allow for recording errors from any PC or internet connected device in the pharmacy. These are stored in a 'virtual book' - the records are searchable and most important quick and easy to use.

## Electronic Responsible Pharmacist Log

Regulation changes mean you have to keep meticulous records of when a pharmacist is working in your pharmacy. It is important to record contact details, registration numbers what time they left, when they started. All this can be recorded in CDRx.

The electronic responsible pharmacist log mimics familiar and commonly used formats and can be accessed from any online device.

New pageDelete page+ Add entryPrint reportPage27/09/2021

Date27/09/2021

THE RESPONSIBLE PHARMACIST (RP) RECORD

Full Name	Registration Number	Time RP responsibility started	Name on Display (✓)	Time RP responsibility stopped	Time left pharmacy	Time returned to pharmacy	Total Time absent	Reason for absence*	Contact Method (eg Mobile Number)
Chris Cave	5673422	09:00		17:00	12:30	13:00	0:30	Lunch Break	07799116045

This record must be completed on the date you are a responsible pharmacist for the named pharmacy and not completed retrospectively.  
If you make amendments to this record then you must initial and date these changes.

\* Good Practice

INCIDENT REPORTING / HANDOVER NOTES

# Electronic Controlled Drugs Register

## ACE YOUR NEXT INSPECTION, EXCEL IN RECORD KEEPING AND PATIENT COMMUNICATION

CDRx is an online electronic controlled drugs register in the UK and is the easiest way to comply with the regulations. Adding it to your pharmacy means that your workflow can improve instantly. It is accessible from any online device.

The system is fully searchable with every drug, every brand and every strength. Each has its own virtual booklet. New drugs can be added easily and quickly.

The interface displays in the familiar standard formats and with as many drug variations as needed, with automatically calculated running balances.

Once you complete your registration at [www.cdregister.co.uk](http://www.cdregister.co.uk) your pharmacy gets unrestricted access to our fully compliant online Controlled Drug Register.

### Included in CDRx:

- Controlled Drugs Register
- Responsible Pharmacist Log
- Near Miss Log
- Dispensing Error Log
- Private Prescription Log
- Emergency Supplies Log
- SOP Repository
- Holiday Calendar
- Accept Patient Feedback
- Built in Advertising Platform
- Data Breach Log
- Staff Temperature Log
- MHRA RSS Feed
- Patient Returns Log
- Specials Recording
- PMR Integration (Additional fees may apply)
- MethaMeasure Integration
- Automatic Stock Check Reminders

The screenshot displays the CDRx web application interface. On the left is a sidebar with navigation menus: 'Pharmacy Demo', 'Reporting' (with sub-items like 'Controlled drug register', 'Responsible pharmacist', etc.), 'Engagement', 'Management', and 'Billing'. The main area is titled 'Drugs' and includes a search bar and filters. Below the filters is a grid of drug cards, each showing the drug name, strength, and a stock level indicator.

Drug Name	Strength	Stock Level
DEXAMFETAMINE 5MG	DEXAMFETAMINE (TABLET)	0
DIAMORPHINE 5MG/2ML	DIAMORPHINE (INJECTION)	15
DIAMORPHINE 10MG/2ML	DIAMORPHINE (INJECTION)	0
DIAMORPHINE 30MG/2ML	DIAMORPHINE (INJECTION)	0
DIAMORPHINE 100MG/5ML	DIAMORPHINE (INJECTION)	0
DIAMORPHINE 500MG/5ML	DIAMORPHINE (INJECTION)	0
FENTANYL 12MCG/HR	FENTANYL (PATCH)	85
DUROGESIC DTRANS 12MCG/HR	FENTANYL (PATCH)	0
DUROGESIC DTRANS 25MCG/HR	FENTANYL (PATCH)	0
FENTANYL 25MCG/HR	FENTANYL (PATCH)	80
FENTANYL 37.5MCG/HR	FENTANYL (PATCH)	0
FENTANYL 50MCG/HR	FENTANYL (PATCH)	75
DUROGESIC DTRANS 50MCG/HR	FENTANYL (PATCH)	0
FENTANYL 75MCG/HR	FENTANYL (PATCH)	0
FENTANYL 100MCG/HR	FENTANYL (PATCH)	0

Want to know more? Call **0800 027 0671** or visit [www.cdregister.co.uk](http://www.cdregister.co.uk)



Sign up now for your  
FREE 28 day trial

t: 0800 027 0671  
[www.cdregister.co.uk](http://www.cdregister.co.uk)

